

Buffalo Mountain Metropolitan District "BMMD"

Serving the Wilderdest Community For Over 53 Years

[Visit our Website](#)



Snowplowing

Snow Plowing Procedures

Reminder to all BMMD Customers

Snow plowing and winter maintenance snow removal is a top priority for BMMD in winter. Our snow plow staff is dedicated to keeping Wilderdest roads clear and safe as possible. Keeping private residential driveways and HOA entrances open in winter is the responsibility of the property owner. During snowstorms, we prioritize roads according to public safety needs. Ryan Gulch road is our top priority followed by Twenty Grand Drive and Buffalo Drive roads that serve as major routes for ambulances and fire trucks. Next, we focus on side roads and residential areas.

Residents of Wilderdest must also do their part by complying with the following Summit County/BMMD winter maintenance requirements:

- **Do not snow blow, plow, or shovel snow from your driveway out onto or across the road, right-of-way, recreation path or drainage ditch.**
- Do not park in streets/right-of-ways or recreation path. Parking any vehicle and/or trailer in the street or right-of-way is prohibited and subject to ticketing and/or towing.
- Snow removed from a private driveway or parking area must be stored on your own property at least 10 feet from the paved edge of the road.
- Do not let children play in roadside snow banks!
- Do not walk in the street! This is extremely dangerous for you and our plow drivers. Please carry a flashlight while walking at night so the plow drivers can see you.
- It is illegal to pass on double yellow roads, i.e., Ryan Gulch. Do not pass plows! This is hazardous for you and for them.
- Put your trash and recycling bins out on the morning of your collection day, not the night before and remember to bring your bins back inside the same day. This is a year-round district requirement.
- Keep trash cans out of roads at all times. Hint - shovel out a spot for

the bins just off your driveway apron so the plows do not hit them.
Drivers are not responsible for trash cans in road ways.

- Mark your infrastructure (driveway culverts, driveways, outside water shut off or curb stop valve, sewer cleanouts, etc.).
- Wear reflective or bright colored clothing and a headlamp to be visible in inclement weather and at night.

Ways to stay connected/informed:

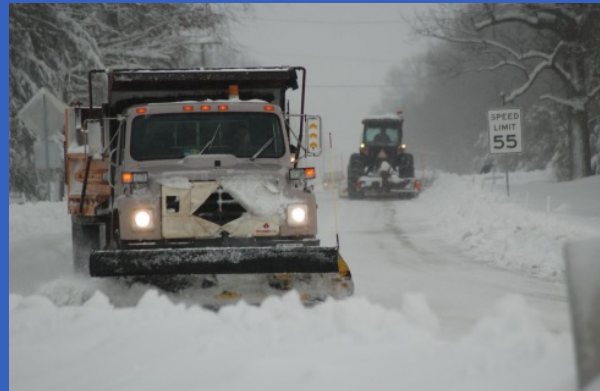
- Check our website. We will post the day before a pushback if possible.
- District will email HOA companies to give advance warning of potential berms in driveways
- Look for our electronic sign at the bottom of the hill for up-to-date information

Snow removal operations for county roadways utilize the right-of-way area for snow storage. Snow removal operations during a storm, or the clean-up that begins when the storm abates, may result in a berm of snow across private driveways or encroachments to county roads. Homeowners and residents are responsible for maintaining their own driveways, entrances, and parking areas.

Please click on the links below for more information:

[Summit County Government Winter Maintenance Page](#)

[Video of the Top 7 Tips for Snow Removal](#)



Culverts

Buffalo Mountain Metropolitan District Driveway Culverts - Owner Responsibility

High snow loads, steep mountainous roads and drainage make for difficult culvert and ditch maintenance. Driveway culverts are susceptible to corrosion as well as damage from plow contractors, cars driving off the road, or any type of contracted excavating.

Summit County Code & BMMD Regulations state: “It is the responsibility of

the property owners to maintain their culverts free and clear of silt, mud, debris and ice at all times. Please find below some helpful tips for property owners to maintain free flowing driveway culverts and correct blockages. Culverts are prone to filling in with sediment after a large rain event or spring runoff. Once filled in either partially or wholly, ice will build up in the winter and freeze from the bottom up until it's completely blocked. This is normally only an issue during spring runoff but is also present during low snow winters. When driveway culverts become clogged or ice dammed, they back up and flow into the roadways. The water then freezes creating a hazard for all.

Helpful Maintenance Tips

- If culvert cleaning is necessary, talk to your neighbors. Jetting companies will give better rates to multiple projects and/or can eliminate mobilization charges (see contacts below).
- Keep the upper & lower ends of the driveway culverts clear! Don't plow or store snow on either end.
- Inspect your culvert in the summertime. If there is more than 25% of sediment, clean it out before winter.
- Keep the ditch above the culvert free of debris, loose rocks, or anything that can migrate downhill
- Protect the outfall with proper bedding to prevent erosion
- Maintain a constant slope for the drainage and eliminate any high or low points in ditches
- Maintain a constant depth and width of the ditch
- Compact all soils in trenches to alleviate erosion
- Extra care should be taken if thawing plastic culverts
- BMMD may require owners to heat tape their culvert to ensure flow during the winter months to minimize the potential of ice forming on roadways. Heat tape in winter to prevent freezing is a reliable and efficient option if installed correctly. If heat tape is used, protect the wire and components from plow and vehicular damage and size electrical cord accordingly.
- Trough Heaters are also an option which can be placed directly on the ice but will take a longer period of time to melt out thoroughly. If a

trough heater is used, protect the wire and components from plow and vehicular damage and size electrical cord accordingly

Repairs & Replacements

- If it appears that your culvert is rising or “floating” then it’s probably a poor bedding issue under the pipe. You should replace the culvert by adding the proper 4” minimum or more of bedding cover on top of culvert before any asphalt or paving is added.
- Replace culvert to proper size, slope and bedding.
- Install flared ends on uphill side if needed
- Improve ditch soils and slopes to prevent erosion.

BMMD Water/Sewer Contact Information

24 - hour road emergency:

Contact Rocky Paden (RKR) - (970) 333-8577

District Contacts:

- BMMD Office (970) 513-1300,
- BMMD Website - <https://bmmd.colorado.gov>
- Will Yates, BMMD District Manager will@bmmd.org
- Greg Morgano, BMMD Field Operations Manager greg@bmmd.org

Contractors for Culvert Maintenance & Repairs

- RKR Inc - (970) 513-4691 or (970) 333-8577
<https://rkrincorporated.com>
- Snowbridge - (800) 426-6827
www.Snowbridge.com
- G&G Services - (970) -387-8612,
email: info@ggservicessummit.com

H. Provision for Drainage:

Driveway design shall make adequate provision for drainage and prevention of erosion.

1. Drainage from driveways shall be diverted to roadside ditches or other appropriate drainage way(s). Drainage from driveways shall not flow onto roads.
2. When necessary to handle roadside drainage, driveways shall use culverts, drainage pans or other devices suitable for the conveyance of roadside drainage. Final approval for the types of drainage items used and the locations of such items shall be at the discretion of the County Engineer or his delegate.
3. Culverts shall be corrugated metal pipes, or other material types approved by the Road & Bridge Department. In addition, culvert design and installation shall be in compliance with the following:
 - a. Culverts shall have either flared end sections or shall have annular ends.
 - b. There shall be a minimum of four (4) inches of road-base cover over culverts serving driveways.
 - c. Culvert lengths greater than 30 feet are not allowed.
 - d. Culverts installed for driveways shall be sized and installed subject to the provisions of the required right-of-way access permit issued for the installation, but in all cases the minimum diameter for these culverts shall be 15-inches.
4. Drainage pans shall be designed to accommodate flows associated with the 25-year design storm. Concrete mix designs for drainage pans shall be submitted to the Engineering Department for approval prior to installation.
5. Property owners shall be responsible for keeping their culverts clean and ice-free. The Road & Bridge Department may require owners to heat tape their culvert to ensure flow during the winter months to minimize the potential of ice forming on roadways (see Section 5507.02).

5507.02: Providing for Drainage (pg40+41)

A. Culverts are required where driveways connect to roadways unless specifically exempted by the Road & Bridge Department and these regulations. It is the responsibility of the property owners to maintain their

culverts free and clear of silt, mud, debris and ice at all times. Repair of damage to a road caused by a blocked culvert or lack of a culvert is the responsibility of the property owner. If it becomes necessary for the County to undertake repairs, costs will be billed to the property owner by the Road & Bridge Department as may be authorized by law (see C.R.S. Section 43-5-303 et seq.).

B. Water that flows out of driveways must be diverted to ditches. Repair of damage to roadways caused by such water is similarly the responsibility of the owner and repair costs will be billed accordingly

Review the county codes in regards to drainage and driveway culverts:

<https://www.summitcountyco.gov/541/Road-Bridge-Standards>



Backflow Inspections



Protect Your Drinking Water!

BMMD strives to produce the best drinking water quality possible. In doing so,

all multi-family condos (HOA's), must test and submit backflow reports to BMMD annually! Per the rules and regulations, **all annual reports must be submitted by September 30th**. Make sure your property manager is aware. Please don't wait and get your backflow scheduled as soon as possible!

For a full list of rules and regulations visit our website at

[BMMD Website Rules and Regulations](#)