

NOTE
 Sanitary sewers
 A1 to A14 10" V.C.P.
 T1 to T5 15" V.C.P.
 T5 to T6 12" V.C.P.
 T12 to T14 12" V.C.P.
 T6 to T12 10" V.C.P.
 T14 to T15 10" V.C.P.
 REST 8" V.C.P.

LEGEND
 --- 10" Ductile iron pumping line.
 --- 6", 8", 10", 12" Ductile iron distribution system.
 --- Sanitary sewers, existing
 --- Hi-pressure gas transmission line.
 --- Sanitary sewer relief line.
 --- 10" Ductile iron pumping lines, phase II.
 --- 6", 8", 10", 12" Ductile iron distribution system, phase II.
 ● Sanitary sewers, phase III
 L.S. — Lift station
 T.P. — Treatment plant

REVISIONS
July 10, 1972
Feb. 26, 1973

BUFFALO MOUNTAIN
 WATER AND SANITATION DISTRICT

MASTER PLAN

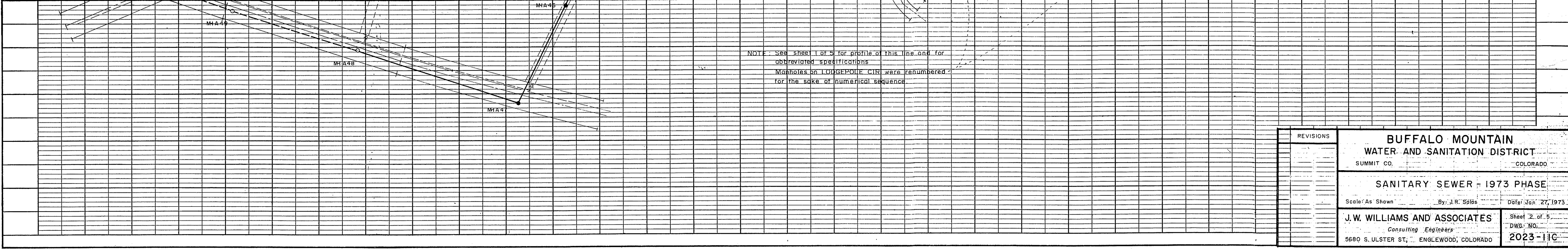
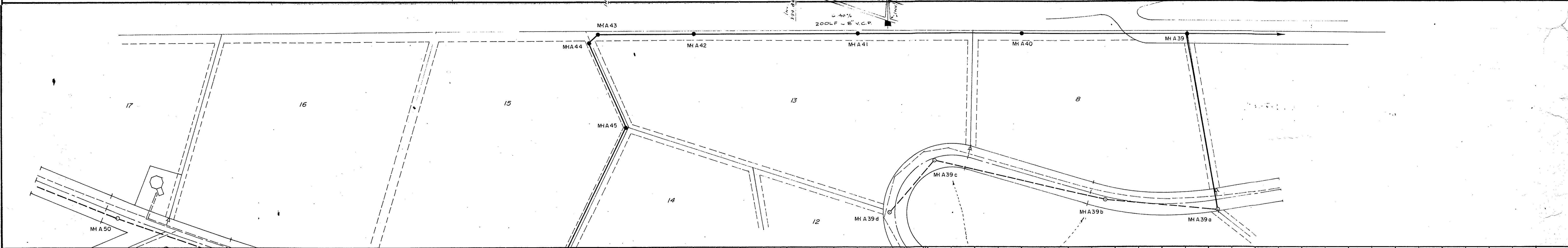
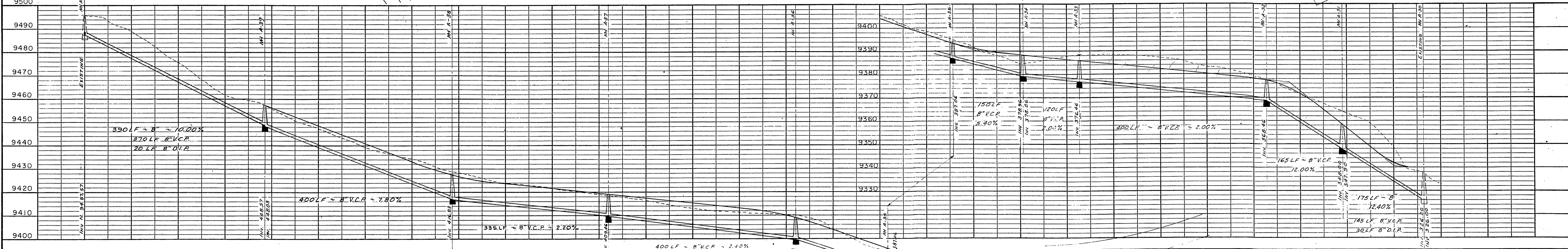
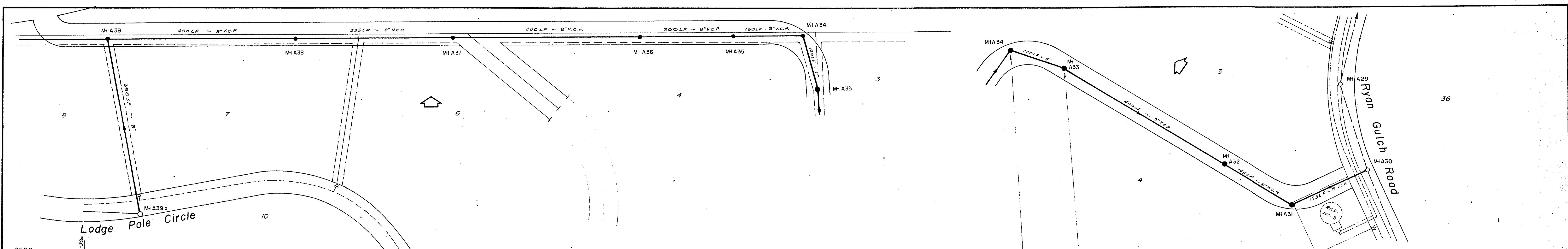
Scale 1" = 200' By J.A.L. Date SEPTEMBER 20, 1971
 J.W. WILLIAMS & ASSOCIATES
 Consulting Engineers
 5680 S. ULSTER ST., ENGLEWOOD, COLORADO
 Sheet 1 of 1
 2023-10-11

Sewer Profiles
 1973 Const.

DOM CLARK

PLAN SURVEYED, PLOTTED, ALIGNED, CHECKED, NO. OF MAN CHECKED, NO.

PROFILE SURVEYED, PLOTTED, CHECKED, STRUCTURE NOTATIONS CHECKED, NO.



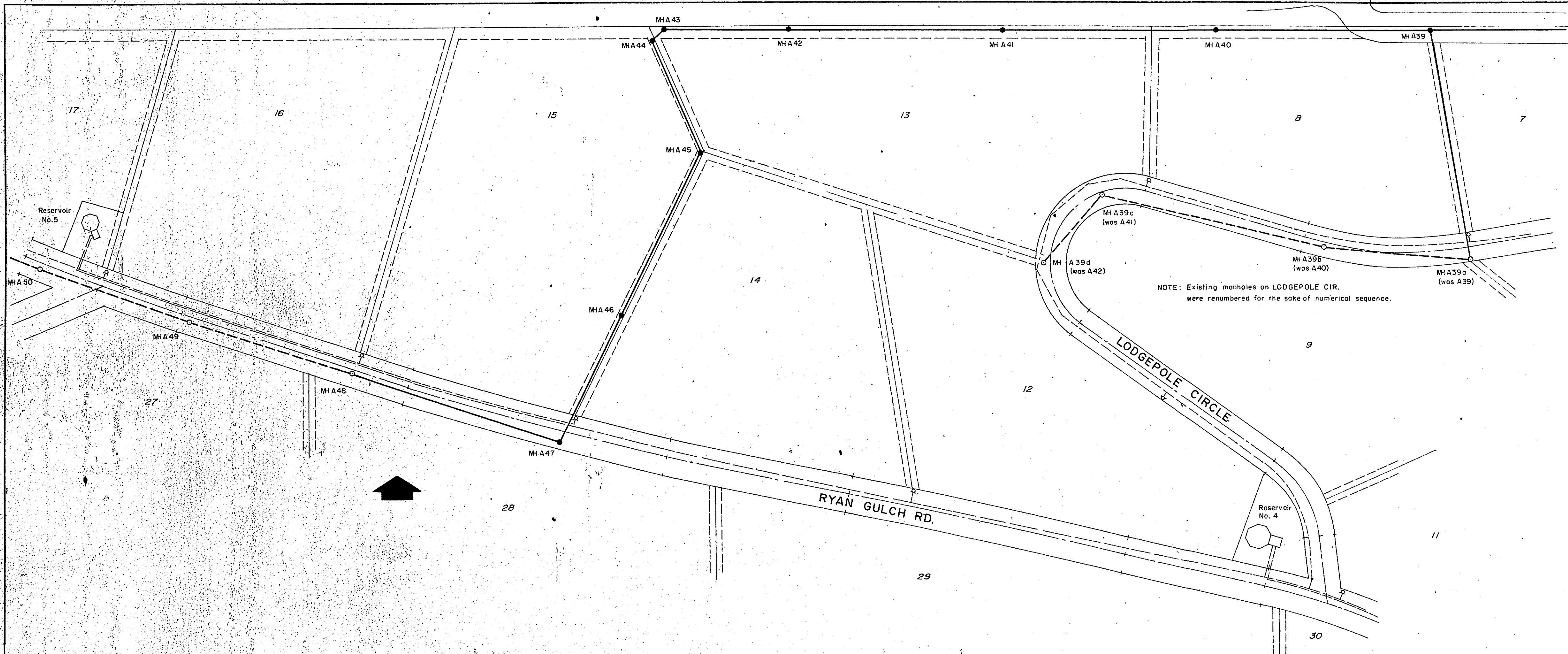
NOTE: See sheet 1 of 5 for profile of this line and for abbreviated specifications. Manholes on LODGEPOLE CIR were renumbered for the sake of numerical sequence.

REVISIONS	BUFFALO MOUNTAIN WATER AND SANITATION DISTRICT SUMMIT CO. COLORADO	
	SANITARY SEWER - 1973 PHASE Scale: As Shown By: J.R. Salas Date: Jan 27, 1973	
	J.W. WILLIAMS AND ASSOCIATES Consulting Engineers 5680 S. ULSTER ST., ENGLEWOOD, COLORADO	Sheet 2 of 5 DWG. NO. 2023-11C

GENERAL NOTES AND SPECIFICATIONS

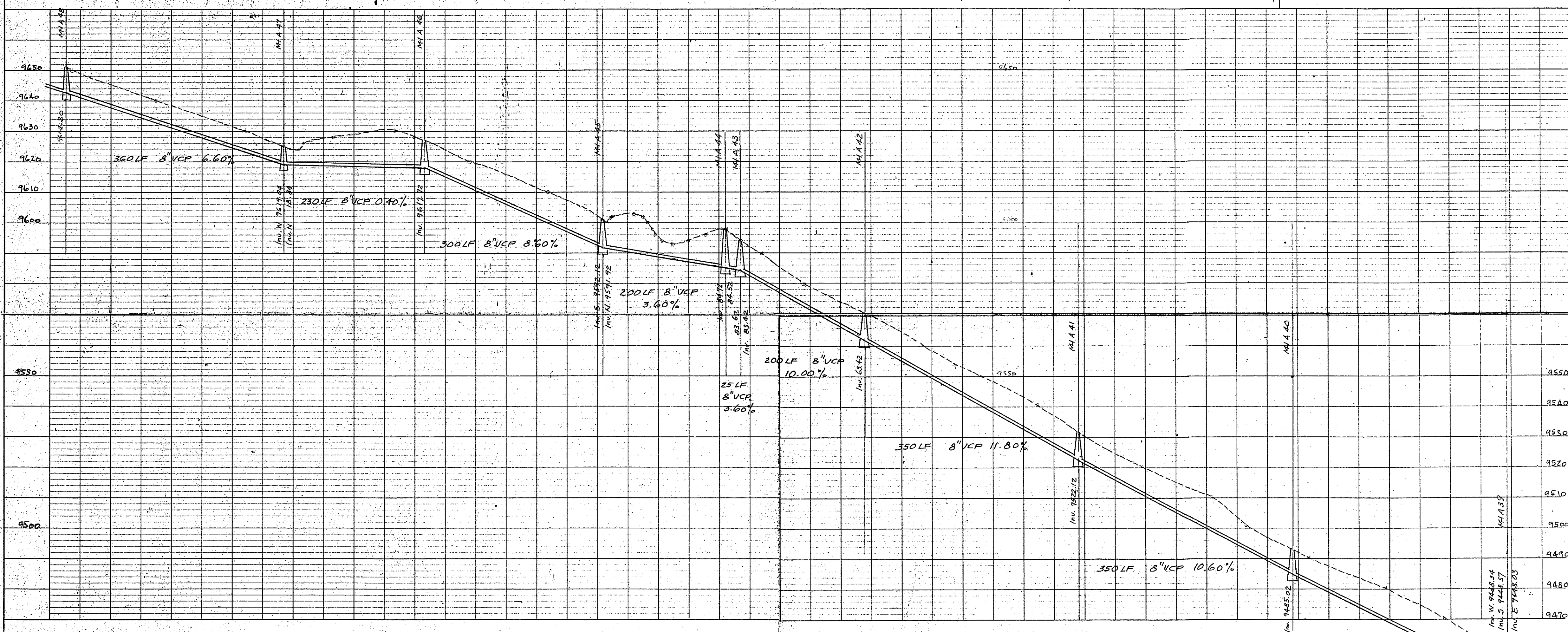
(Abbreviated excerpts given below are for convenient and quick reference but shall not be considered to imply omission of any part of the detailed specifications for sanitary sewer mains and manholes)

1. Clearing and grubbing shall be strictly controlled to create a minimal damage to the natural environment.
2. Disposal of cleared materials shall be only as directed by the engineer.
3. All trenching shall be done to line and grade established by the engineer and by open cut. Excavated materials are considered suitable for backfill but the backfill to 12" above pipe shall be select material (Spec. item 2m).
4. Pipe for sanitary sewers shall be vitrified clay conforming to ASTM C-200-65T with factory type joints.
5. Manholes shall be 4 ft. inside diameter, precast concrete with offset cones, Denver Heavy pattern ring and cover, aluminum steps, and poured in place concrete bases. Inverts shall be shaped by hand for optimum flow conditions.
6. Metallic pipe for either water mains or sanitary sewers (at special crossings) shall be cement-lined ductile iron with push-on joints and compatible fittings.
7. A separation of 10 ft. between sewer and water lines shall be maintained.
8. Completed sewer lines shall be lamped by the engineer and any improperly installed line shall be ordered replaced at the contractor's expense.
9. Cleanup shall be a continuous operation and all of the provisions for seeding and landscaping will apply to areas disturbed for the purpose of sewer construction.



DATE	
BY	
SURVEYED	
NOTED	
GRADES CHECKED	
STRUCTURE NOTATIONS CHECKED	
PLAN	
NOTE BOOK	
NO.	

DATE	
BY	
SURVEYED	
NOTED	
GRADES CHECKED	
STRUCTURE NOTATIONS CHECKED	
PROFILE	
NOTE BOOK	
NO.	



BENCH MARKS (USGS datum)

MH No.	Inv. Elev.	Rim Elev.
A 27	9255.23	9265.02
A 30	9326.00	9336.81
M 16	9343.21	9351.60
M 18	9388.86	9396.07
M 24	9488.34	9496.36
A 48	9642.80	9648.79
A 50	9674.10	9683.91

Top of W end of 48" CMP culvert at sta. 82+ on Ryan Gulch Rd. 9760.98

Printed in U.S.A.
On ARKWRIGHT Tracing Cloth

PLATE 1 PLAN - PROFILE B P R STANDARD
ENGINEERING CO. CHICAGO - NEW YORK

REVISIONS		
BUFFALO MOUNTAIN WATER AND SANITATION DISTRICT		
SANITARY SEWERS - 1973 PHASE		
Scale: H 1"=100' V 1"=20'		By: A.R.S. Date: Feb. 6, 1973
J.W. WILLIAMS AND ASSOCIATES Consulting Engineers 5680 S. ULSTER ST. ENGLEWOOD, COLORADO		Sheet 1 of 5 DWG. NO. 2023-11C

